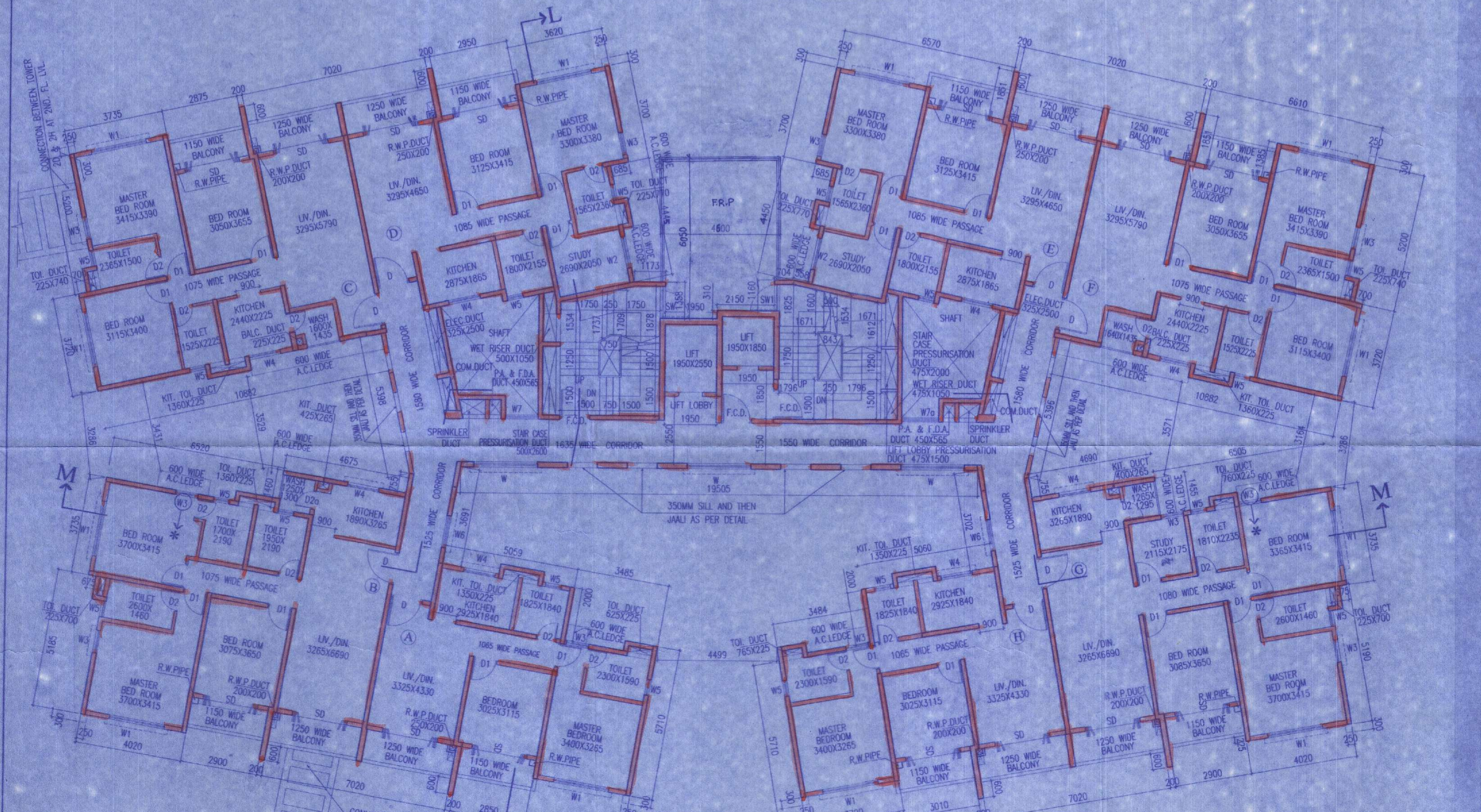
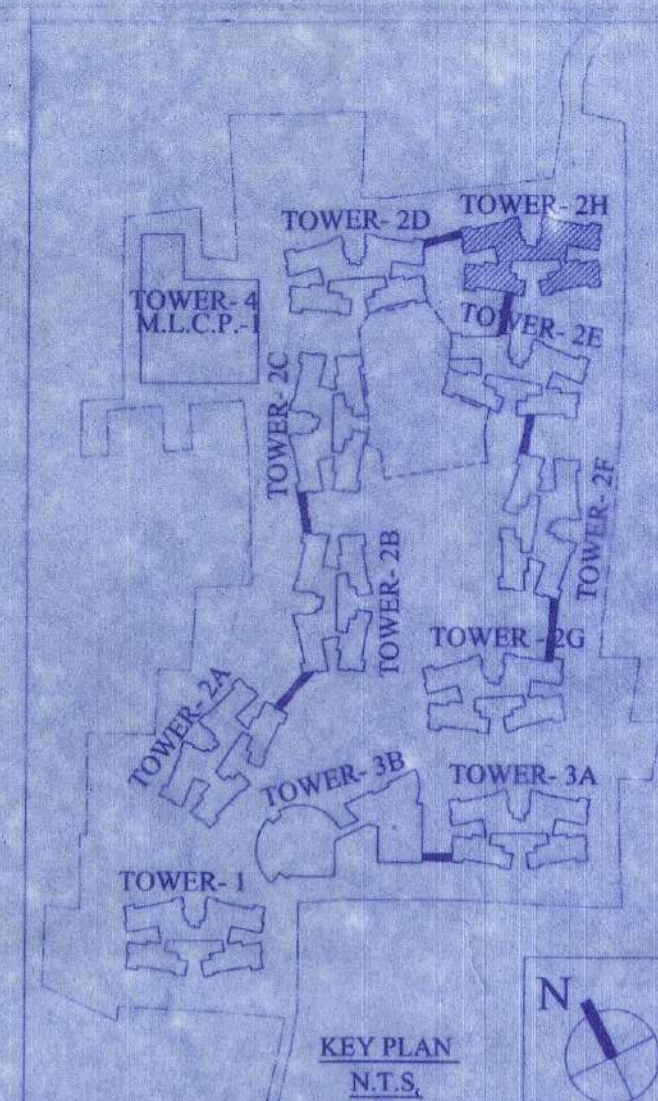


2ND, 3RD, 4TH, 5TH, 7TH, 9TH, 10TH, 12TH & 19TH FLOOR PLAN



6TH, 11TH & 17TH FLOOR PLAN

NOTE
* THIS WINDOW IS PROVIDED ONLY FOR ACCESS TO A.C. LEDGE FOR MAINTENANCE OF A.C.



KEY PLAN N.T.S.

NAME OF OWNER

NAME OF THE COMPANY

1. M/s. Alishan Supply Private Limited
2. M/s. Adya Real Estates Private Limited
3. M/s. Anchor Vastu Private Limited
4. M/s. Antrama Advisory Private Limited
5. M/s. Antrama Dealers Private Limited
6. M/s. Anurakar Supply Private Limited
7. M/s. Aravali Hirse Private Limited
8. M/s. Arch Vanija Private Limited
9. M/s. Arpana Consultancy Private Limited
10. M/s. Arpana Tie Up Private Limited
11. M/s. Artline Homes Private Limited
12. M/s. Artline Projects Private Limited
13. M/s. Artline Realstate Private Limited
14. M/s. Average Complex Private Limited
15. M/s. Average Housing Private Limited
16. M/s. Average Infracon Private Limited
17. M/s. Average Nirman Private Limited
18. M/s. Average Projects Private Limited
19. M/s. Basudev Enclave Private Limited
20. M/s. Basudev Housing Private Limited
21. M/s. Bluebird Tie Up Private Limited
22. M/s. Booster Heights Private Limited
23. M/s. Booster Hirse Private Limited
24. M/s. Brijbhumi Agents Private Limited
25. M/s. Brijbhumi Tie Up Private Limited
26. M/s. Citywings Vyapaar Private Limited
27. M/s. Crossway Heights Private Limited
28. M/s. Crossway Nirman Private Limited
29. M/s. Dayanidhi Suppliers Private Limited
30. M/s. Delta Vyapaar Private Limited
31. M/s. Dhanganaga Hirse Private Limited
32. M/s. Dhanganaga Infracon Private Limited
33. M/s. Dhanganaga Realty Private Limited
34. M/s. Dhanganaga Residency Private Limited
35. M/s. Dreamland Hirse Private Limited
37. M/s. Gaajbhand Vinimay Private Limited
38. M/s. Gaajbhandi Buldocon Private Limited
39. M/s. Gaajbhandi Construction Private Limited
40. M/s. Gaajbhandi Hirse Private Limited
41. M/s. Gaajbhandi Realty Private Limited
42. M/s. Gaajbhandi Enclave Private Limited
43. M/s. Gaajbhandi Homes Private Limited
44. M/s. Gaajbhandi Infracon Private Limited
45. M/s. Gaajbhandi Nirman Private Limited
46. M/s. Gaajbhandi Projects Private Limited
47. M/s. Gaajbhandi Realstate Private Limited
48. M/s. Ganesh Tracom Private Limited
49. M/s. Ganeshvani Promoters Private Limited
50. M/s. Greentop Nirman Private Limited
51. M/s. Guidance Vyapaar Private Limited
52. M/s. Gulmarg Vyapaar Private Limited
53. M/s. Hanurang Tie Up Private Limited
54. M/s. Indivar Tracom Private Limited
55. M/s. Jainendra Distributors Private Limited
56. M/s. Jainendra Marketing Private Limited
57. M/s. Jainendra Merchants Private Limited
58. M/s. Jaldham Tie Up Private Limited
59. M/s. Jaldham Sales Private Limited
60. M/s. Jilimil Sales Private Limited
61. M/s. Jilimil Vyapaar Private Limited
62. M/s. Jinay Merchants Private Limited
63. M/s. Juh Marketing Private Limited

64. M/s. Kalakriti Enclave Private Limited
65. M/s. Kalakriti Homes Private Limited
66. M/s. Kalakriti Housing Private Limited
67. M/s. Kalakriti Properties Private Limited
68. M/s. Kalakriti Realty Private Limited
69. M/s. Kamyabi Consultants Private Limited
70. M/s. Lifelong Enclave Private Limited
71. M/s. LimeLight Hirse Private Limited
72. M/s. Linkrose Construction Private Limited
73. M/s. Linkrose Housing Private Limited
74. M/s. Linkrose Residency Private Limited
75. M/s. Manohar Dealer Private Limited
76. M/s. Manohar Vanija Private Limited
77. M/s. Matrix Sales Private Limited
78. M/s. Maxflow Barter Private Limited
79. M/s. Moonlife Construction Private Limited
80. M/s. Moonlife Nirman Private Limited
81. M/s. Moonlife Residency Private Limited
82. M/s. Miridai Advisory Private Limited
83. M/s. Newwave Merchants Private Limited
84. M/s. Original Realty Private Limited
85. M/s. Panghat Supply Private Limited
86. M/s. Pawanprata Barter Private Limited
87. M/s. Pawanprata Sales Private Limited
88. M/s. Prabhakar Barter Private Limited
89. M/s. Prajapati Commercial Private Limited
90. M/s. Prajapati Dealer Private Limited
91. M/s. Premeagar Advisory Private Limited
92. M/s. Premeagar Tie Up Private Limited
93. M/s. Prime Rose Marketing Private Limited
94. M/s. Radial Housing Private Limited
95. M/s. Radial Residency Private Limited
96. M/s. Rimjhim Commodities Private Limited
97. M/s. Rosemary Distributors Private Limited
98. M/s. Rosemary Tie Up Private Limited
99. M/s. Sadabhar Vyapaar Private Limited
100. M/s. Sagun Advisory Services Private Limited
101. M/s. Sanjivani Vanija Private Limited
102. M/s. Sargam Vyapaar Private Limited
103. M/s. Sawar Vanija Private Limited
104. M/s. Shivasthal Dealers Private Limited
105. M/s. Shivasathal Sales Private Limited
106. M/s. Siddha Style Barter Private Limited
107. M/s. Sidhant Suppliers Private Limited
108. M/s. Silverline Vinimay Private Limited
109. M/s. Skylink Merchants Private Limited
110. M/s. Spandan Suppliers Private Limited
111. M/s. Splendor Vyapaar Private Limited
112. M/s. Style Merchants Private Limited
113. M/s. Sukhjit Vyapaar Private Limited
114. M/s. Sunmart Vyapaar Private Limited
115. M/s. Sunshine Barter Private Limited
116. M/s. Superior Complex Private Limited
117. M/s. Superior Hirse Private Limited
118. M/s. Surdhuni Advisory Private Limited
119. M/s. Sursarita Advisory Services Private Limited
120. M/s. Sursarita Consultants Private Limited
121. M/s. Swastik Barter Private Limited
122. M/s. Terapanth Consultancy Services Private Limited
123. M/s. Timeless Realstate Private Limited
124. M/s. Topten Vyapaar Private Limited
125. M/s. Vidhata Advisory Services Private Limited

Authorised Signatory

SIGNATURE OF OWNER

Alishan Supply Private Limited and Others
111, Park Street, 1st Floor, Kolkata - 700 016.

SCHEDULE OF DOORS & WINDOWS

NO.	OFF	LINTEL	SIZE
D1	-	2150	1200 X 2150
D	-	2150	900 X 2150
D1a	250	2300	900 X 2050
D2	-	2150	750 X 2150
D3	-	2150	700 X 2150
D4	-	2150	1000 X 2150
DW	-	2400	2985 X 2400
DW1	-	2400	2345 X 2400
SD	-	2150	2100 X 2150
SD1	-	2150	1500 X 2150
F.C.D	-	2150	1125 X 2150
F.C.D1	-	2150	1198 X 2150
W	350	2150	2400 X 1800
W1	350	2150	2100 X 1800
W2	350	2150	1200 X 1800
W3	350	2150	850 X 1800
W4	1100	2150	1200 X 1050
W5	1250	2150	600 X 900
W6	350	2150	1200 X 1300
W7	750	2150	700 X 1400
SW	750	2450	1198 X 1700

CERTIFICATE OF STRUCTURAL ENGINEER

CERTIFY THAT THE STRUCTURAL DRAWING AND DESIGN OF BOTH THE FOUNDATION AND SUPERSTRUCTURE OF THE BUILDING BUILDINGS HAS BEEN MADE CONSIDERING THE SOIL TEST REPORT, AS PER THE RULES AND REGULATIONS MADE UNDER THE ACT AND ALSO CONSIDERING ALL POSSIBLE LOADS, SEISMIC LOAD AND THE MOMENTS GENERATED BY THE PROPOSED STRUCTURE AS PER THE BUREAU OF INDIAN STANDARD AND NATIONAL BUILDING CODE OF INDIA AND CERTIFIED THAT IT IS SAFE AND STABLE IN ALL RESPECT AND THESE PROVISIONS SHALL BE ADHERED TO DURING THE CONSTRUCTION.

SANJIV J. PAREKH
M.E. (STRUCTURAL), (CONS. ENGR.),
I.C.E., FIE (F-01202-4)
STER/NKDA / 10 / 00030

SIGNATURE OF STRUCTURAL ENGR.

NAME: Sanjay Parekh
ENROLLMENT NO.: STER/NKDA/10/00030

CERTIFICATE OF ARCHITECT

I CERTIFY THAT ALL THE ARCHITECTURAL DRAWINGS OF THE PROJECT AT R.S.DAG NOS. 470(P), 471(P), 473, 474, 475, 476, 477, 478, 479, 480, 481, 483, 489, 490, 491, 492, 493, 494, 495, 496, 497, 499, 500, 501(P), 502(P), 503, 504(P), 506(P), 507(P), 509(P), 526(P), 528(P), 529(P), 530(P), 531(P), 532, 533 & 501/716(P) OF MOUZA - BHATENDRA, J.L. NO.28 HAVE BEEN PREPARED BY ME COMPLYING WITH THE NEW TOWN KOLKATA PLANNING AREA (BUILDING) RULES, 2014. I ALSO CERTIFY THAT THE PLANS AND DRAWINGS PREPARED BY ME COMPLYING WITH ALL THE PROVISIONS REGARDING THE FIRE PROTECTION AS PER THE PREVAILING NATIONAL BUILDING CODE OF INDIA. SHALL BE HELD RESPONSIBLE IF ANY INCOMPLETE INFORMATION IS FURNISHED BY ME OR ANY VIOLATION OF PROVISIONS OF THESE RULES OR THE PREVAILING NATIONAL BUILDING CODE IS FOUND IN ANY OF THE DRAWINGS AND DOCUMENTS, SIGNED BY ME AND SUBMITTED TO THE SANCTIONING AUTHORITY FOR OBTAINING SANCTION.

M. Agrawal
MONAL AGRAWAL
P.A.C. 2012012
New Town Urban Development Authority
Enrollment No. AGRWINDA/10/00020

SIGNATURE OF ARCHITECT

NAME: MONAL AGRAWAL
ENROLLMENT NO.: AGRWINDA/10/00020

CERTIFICATE OF GEO - TECHNICAL ENGINEER

IT IS CERTIFIED THAT THE COMPREHENSIVE GEO-TECHNICAL REPORT ON SOIL INVESTIGATION HAS BEEN PREPARED BY ME FOR DESIGN AND CALCULATION OF THE FOUNDATION ON THE BASIS OF THE SOIL SAMPLES FOR ESTIMATING THE BEARING CAPACITY OF THE SOIL ON WHICH FOUNDATION OF THE STRUCTURE WILL BE CONSTRUCTED. I SHALL ALSO CHECK THE NATURE OF THE SOIL AFTER EXCAVATION AT SITE SO THAT FOUNDATION IS EXTENDED UP TO THE APPROPRIATE DEPTH THAT HAS BEEN PROPOSED IN THE GEO-TECHNICAL REPORT.

JISHNU PAL
B.Tech (CIVIL), M.E (Geo-tech)
KMC Reg No: G.T. / 32
GTER / NKDA / 10 / 0043
22 / JUN / 2016 - 17

SIGNATURE OF GEO - TECHNICAL ENGINEER

NAME: Shyamal Kumar Mitra
ENROLLMENT NO.: GTER/ENR/10/00010
Subir Ranjan Sarker
Regd. Town Planner
New Town Kolkata Development Authority
Enrollment No.: TPER/NKDA/10/00036

SIGNATURE OF TOWN PLANNER OR URBAN DESIGNER

NAME: Subir Ranjan Sarker
ENROLLMENT NO.: TPER/NKDA/10/00036

SANJIV GUHA
BSC, BCE, FIE (F-115554-5)
CHARTERED ENGINEER
STER/NKDA/15/00035

SIGNATURE OF STRUCTURAL REVIEWER

NAME: Sanjay Guha
ENROLLMENT NO.: STREV/NKDA/15/00035

TYP. (2ND, 3RD, 4TH, 5TH, 7TH, 9TH, 10TH, 12TH & 19TH) FLOOR & TYP. (6TH, 11TH & 17TH) FLOOR PLAN. TOWER - 2H

PROPOSED ADDITION OF INO. (G+X IX) STORED RESIDENTIAL BUILDING NAMEDLY TOWER-2H & REVISION OF INO. (LGHUG-VII) STORED MLCF BUILDING NAMEDLY TOWER - 4 WITH PREVIOUS SANCTIONED OF INO. (G+H) STORED BUILDING NAMEDLY 3B AND 9BOS. (G+X IX) STORED RESIDENTIAL BUILDING NAMEDLY TOWER - 1, 2A, 2C, 3A, 2B, 2C, 2D, 2E & 2F APPROVED BY EXECUTIVE OFFICER, RAJARHAT PANCHAYAT SAMITI WIDE MEMO NO. 926/RPS DATED 28/08/2018.

IN WHICH OCCUPANCY CERTIFICATE HAS BEEN OBTAINED FOR ANCHOR TOWER NAMEDLY TOWER - 1, 2A, 2C & 3A WIDE MEMO NO. 2696/RPS DATED 01.08.2019 FROM RAJARHAT PANCHAYAT SAMITI, IN RESIDENTIAL COMPLEX AT MOUZA - BHATENDRA, J.L. NO. 28, R.S./L.R. DAG NOS. 470(PART), 471(PART), 473, 474, 475, 476, 477, 478, 479, 480, 481, 483, 489, 490, 491, 492, 493, 494, 495, 496, 497, 499, 500, 501(PART), 502(PART), 503, 504(PART), 506(PART), 507(PART), 509(PART), 526(PART), 528(PART), 529(PART), 530(PART), 531, 532, 533 & 501/716(PART), P.S - RAJARHAT, WITHIN THE JURISDICTION OF RAJAHAT BISHNUPUR NO. 1 GRAM PANCHAYAT, DIST- NORTH 24 PARGANAS.

ARCHITECTS

SCALE	DATE	SHEET NO.	DEALT	CHECKED
1:100	08.03.2021	6 OF 14	GARGI	SHILA

ARCHITECT: **Monal Agarwal** Enrollment No: **ACHR/NKDA/10/00020**
 CIVIL/STRUCTURAL ENGINEER: **Sanjiv Panekb** Enrollment No: **STER/NKDA/10/00020**
 GEO-TECHNICAL ENGINEER: **Jishnu Pal** Enrollment No: **GTER/NKDA/10/00043**
 TOWN PLANNER/URBAN DESIGNER: **Subir Ranjan Sankar** Enrollment No: **TPER/NKDA/10/00036**
 STRUCTURAL REVIEWER: **Sanjib Guha** Enrollment No: **STRV/NKDA/15/00003**

NOTE: This NOC is valid only for the documents submitted by the applicant and approved by the Addl. Executive Officer, North 24 Parganas. If there is any change in the design or plan or any act of negligence of fact in connection with the above project including the concerned laws, plans, drawings design etc., then, this NOC shall stand cancel.

NEW TOWN KOLKATA DEVELOPMENT AUTHORITY
 No Objection Certificate for
 Sanction of Building Plan for Pollution Purpose
 Memo No. **481/NKDA/BPS-04(3)/2020**
 Date: **24/01/22**

Building Particulars: **Proposed addition of one (3+19) storied residential building (tower-24) and revision of NLP Block at Heiza-Bhatanda, S.L.No. 28, North 24 Pge.**

Note: All the recommendations from Pollution Control Board is to be followed thoroughly at the time of construction.

Sayanjit Majumdar
 Assistant Architect
 New Town Kolkata Development Authority

Tapan Kumar Dwari
 Chief Architect
 New Town Kolkata Development Authority

5/11

BL-24
 Typ Floor Plan- 2, 3, 4, 5, 7, 9, 10, 12 & 19
 - 6, 11 & 17

SANCTIONED & APPROVED

Ras
 Executive Officer
 Rajarhat Panchayat Samity
 Rajarhat, North 24 Parganas

Approval Order No. **287/RP**
 Date: **03/22**
 Valid up to: **03/27**

JISHNU PAL
 B.Tech (Civil), M.E. (Structural)
 22, VIBHON (G-1), 2018-19
 750013, RAJARHAT, NORTH 24 PARGANAS

RAJARHAT PANCHAYAT SAMITY
 Rajarhat, North 24 Parganas

RAJARHAT PANCHAYAT SAMITY
 Rajarhat, North 24 Parganas